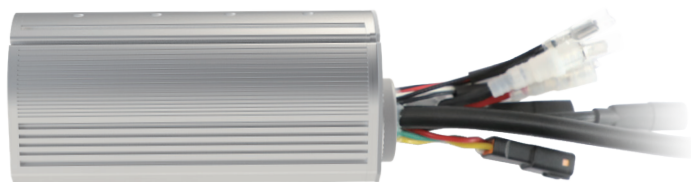


10 DEALER MANUAL FOR CR X10T.250.FC

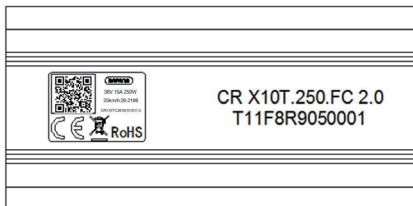


CONTENT

10.1 Introduction	2
10.2 Product Description	2
10.2.1 Outline and geometric size.....	2
10.2.2 Specifications.....	3
10.2.3 Functions Overview.....	3
10.3 Controller Installation	3
10.3.1 Cabling.....	3

10.1 INTRODUCTION

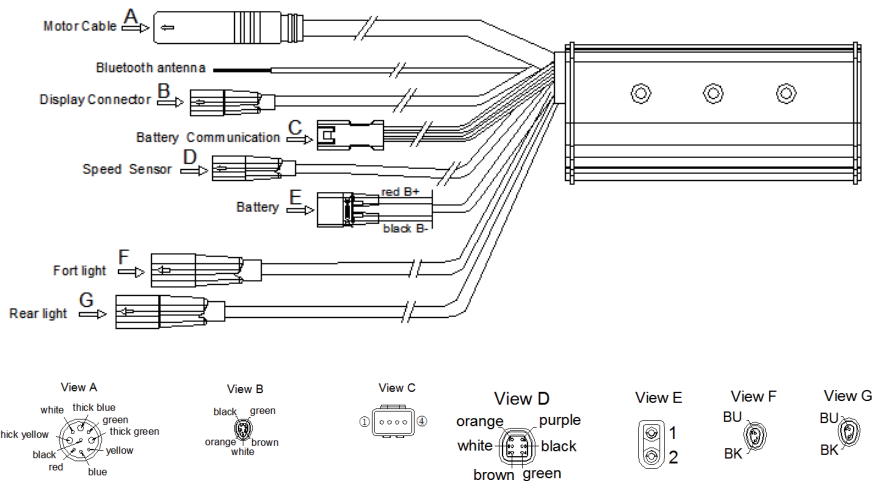
- Model: CR X10T.250.FC
- The label marking is as follows:



i **Note:** Content in the label is important information about this product. Please do not remove the information from the controller.

10.2 PRODUCT DESCRIPTION

10.2.1 Outline and geometric size



10.2.2 Specifications

- Rated voltage(V): 36/43/48
- Rated power (W): 250
- Waterproof: IP65
- Certification: CE / ROHS
- Outdoor Temperatures: -20 °C~45 °C
- Storage room humidity: 30%-70%

10.2.3 Functional Overview

- Communication protocol: CAN
- Communicate with battery and BMS
- Power assistant type: speed
- Power off at braking

- Temperature and voltage protection
- Low power lighting system: automatic light on at power on, turn on/off by Apps, rear lighting is 6V.
- Bluetooth 5.0 module
- Support level control: Apps can change the support level (0-5), at power on is it at the maximum level. The speed limit is at 26.5km/h and power cut off after the speed reaches 27km/h.
- The controller stops working when the battery is charging.
- OTA function: through app (Bafang Go) you can perform the wireless update.

10.3 CONTROLLER INSTALLATION

10.3.1 Cabling



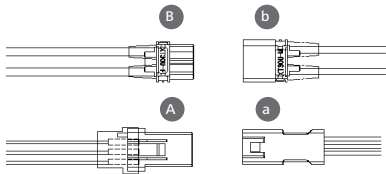
Extension cable for motor



EB-BUS overview

10.3.1.1 Connect the battery

Link the communication cable and power cable from controller with battery.



A. The female connector of the communication cable from the battery BMS

a. The male connector of the communication cable from the controller

- B. The female connector from the battery
- b. The male connector from the controller

10.3.1.2 Connect the speed sensor

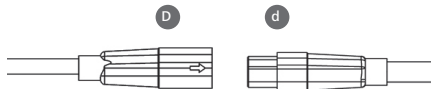
Please connect the connectors from the controller and the speed sensor together.



- C. The male connector from the speed sensor
- c. The female connector from the controller

10.3.1.3 Connect the EB-BUS

Please connect the connectors from the controller and EB-BUS cable together.



- D. The female connector from the EB-BUS cable
- d. The male connector from the controller

10.3.1.4 Connect the extension cable for motor

Please connect the connectors from the controller and extension cable from motor together

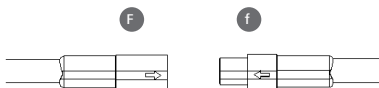


E. The extension cable (male connector) for motor

e. The female connector from the controller

10.3.1.5 Connect the light cable

Please connect the connectors from the controller and the light cable together.



F. The male connector from the controller

f. The female connector from the light cable

10.3.1.6 Connect the display to the EB-BUS

Please connect the connectors from the display and EB-BUS cable together.



G. The female connector from the EB-BUS

g. The male connector from the display